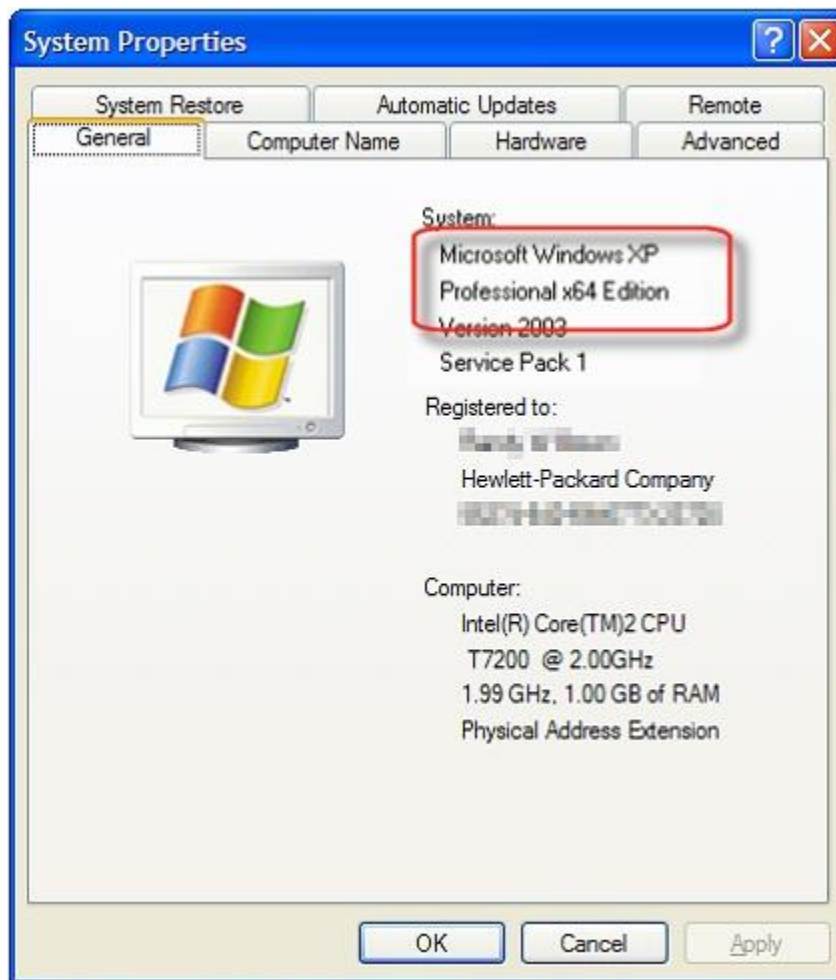


## Firefox 52.9.0 Installation Guide - English version:

### Step 1:

#### Determine the version of Windows XP

1. Click Start and right-click My Computer.
2. Select the Properties option.
3. In the General tab of the System Properties window, if it has the text **Windows XP Professional x64 Edition** (as shown below), the computer is running the 64-bit version of Windows XP. Otherwise, the computer is running the 32-bit version of Windows XP.



### **Step 2:**

Based on the finding on Step 1, download the respective version of firefox by the link below:

#### **Windows XP 32-Bit**

<https://archive.mozilla.org/pub/firefox/releases/52.9.0esr/win32/en-US/Firefox%20Setup%2052.9.0esr.exe>

#### **Windows XP 64-Bit**

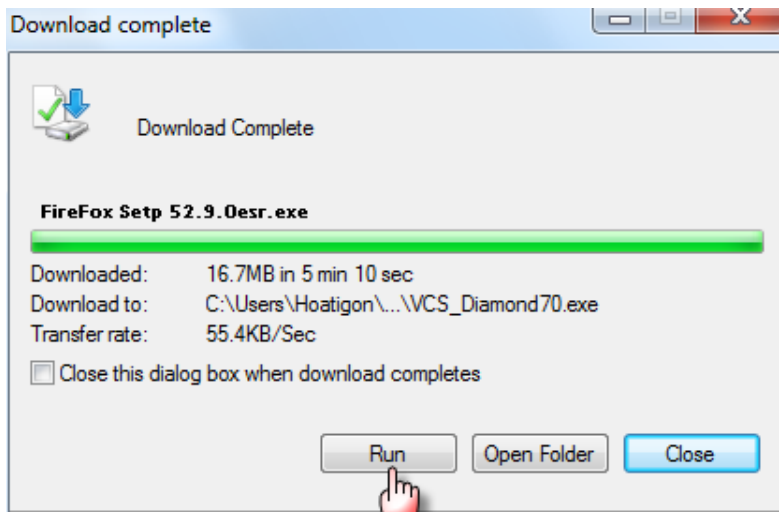
<https://archive.mozilla.org/pub/firefox/releases/52.9.0esr/win64/en-US/Firefox%20Setup%2052.9.0esr.exe>

### **Step 3:**

Once the download completed, please press Run.

(Make sure you get local admin right to install Firefox.

For Details, please check with your company's IT support.)



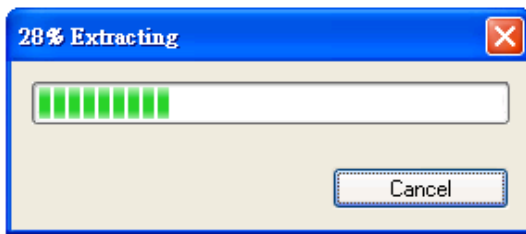
### **Step 4:**

If you are using Internet Explorer to download, the below warning message may appear, just press Install to continue with downloading.



**Step 5:**

Wait until the extraction completed.

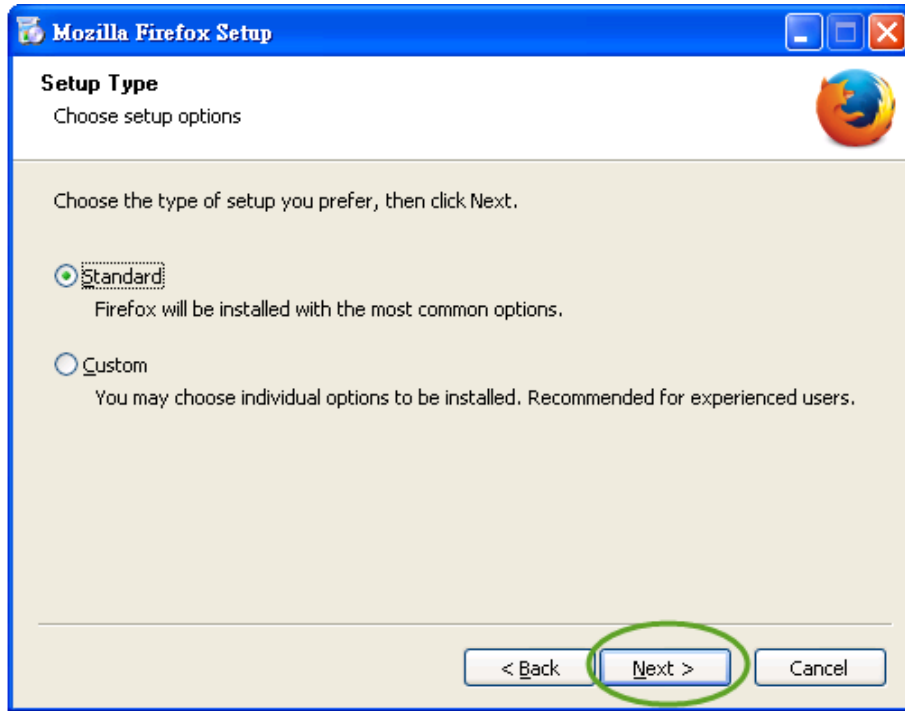


**Step 6:**

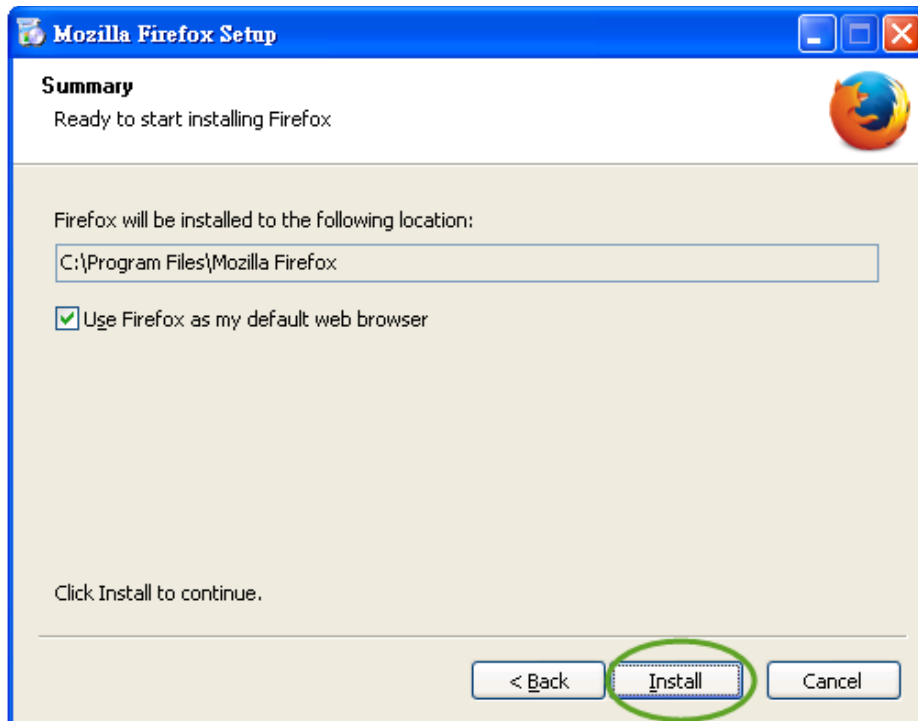
Click Next.



**Step 7:**  
Click Next.

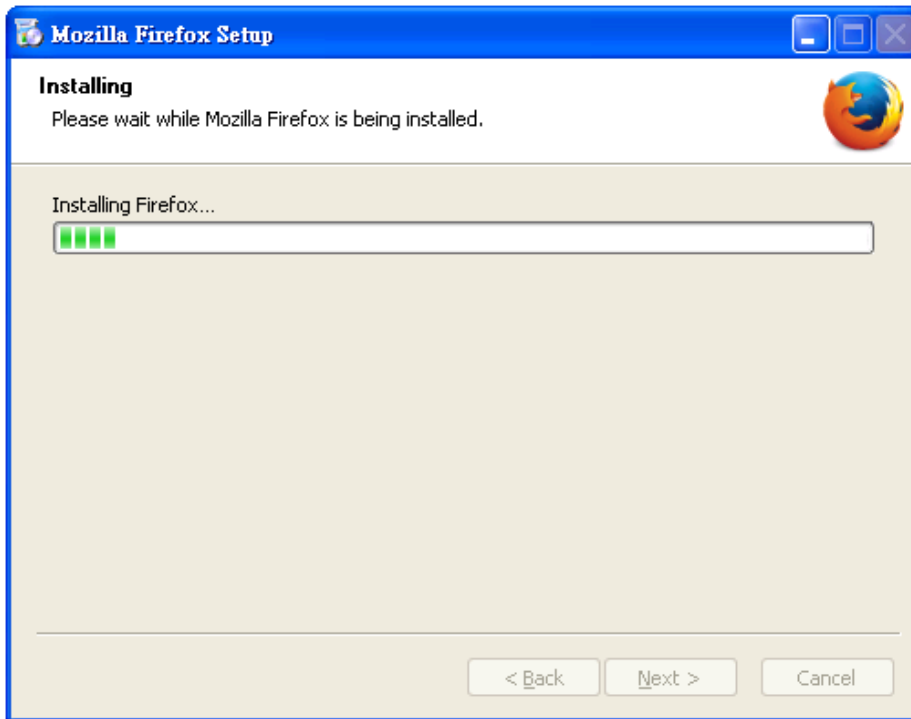


**Step 8:**  
Click Install.



**Step 9:**

Wait until the installation completed.



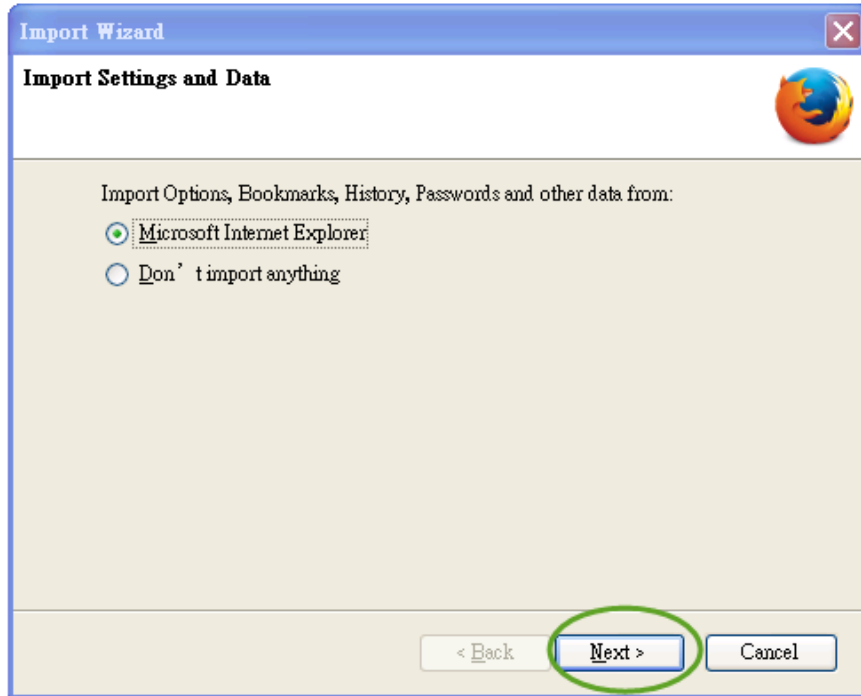
**Step 10:**

Once the installation is completed, please click Finish.



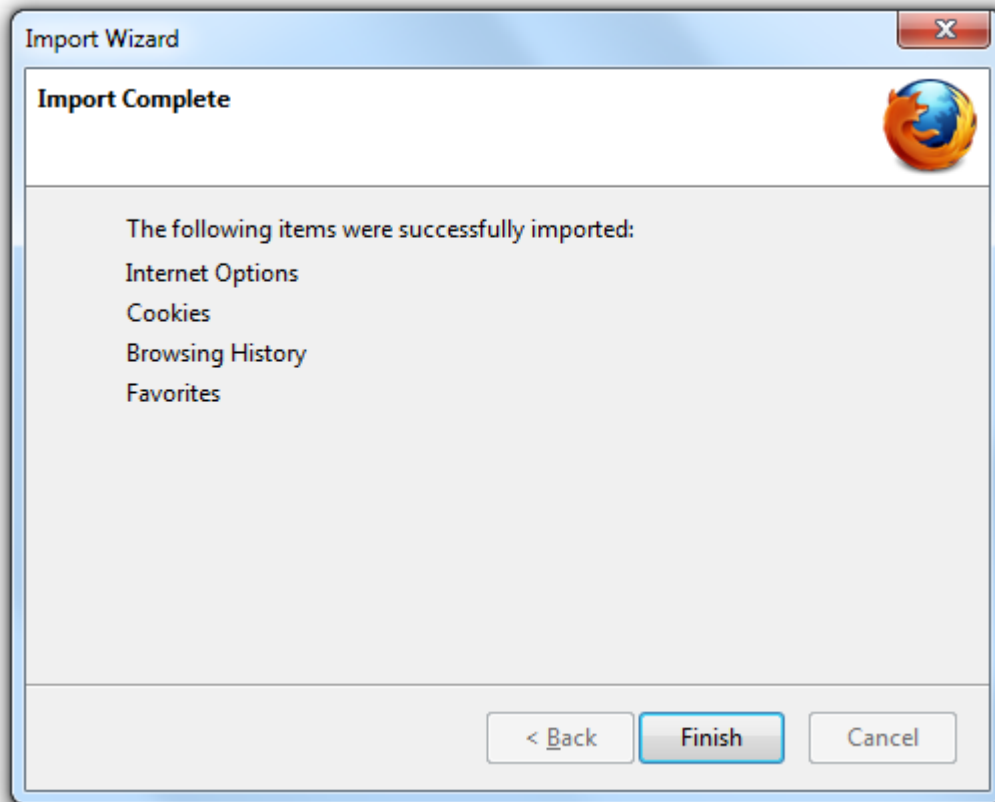
## **Step 11:**

Firefox may ask you to confirm the source of import options, bookmarks, history and other information, please take the default option (Microsoft Internet Explorer), simply click Next to continue.



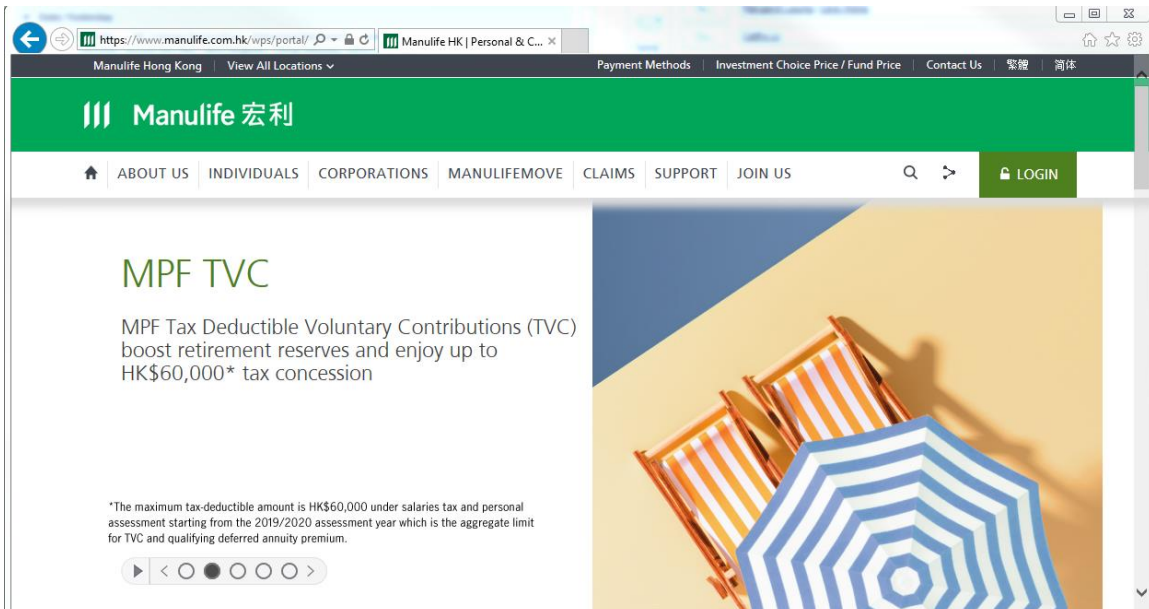
**Step 12:**

Wait until all the items are imported successfully.



**Step 13:**

Perform post-check to ensure you could log in to our website at [www.manulife.com.hk](https://www.manulife.com.hk) after the installation of Firefox.



- END -